



SINGLE-DECK



LENGTH : GALVANIZED
hanger : galvanized

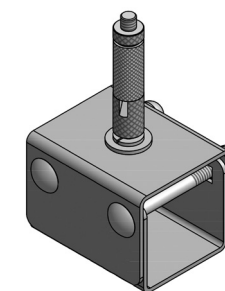
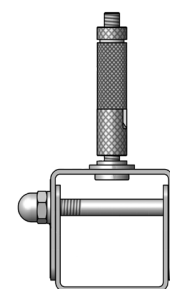
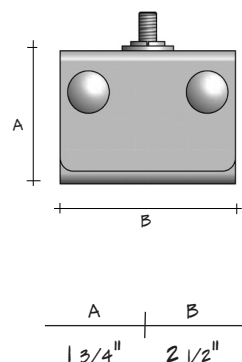
DOUBLE-DECK



LENGTHs : GALVANIZED
hanger : galvanized

HANGER / CABLE GLIDE

SINGLE-DECK

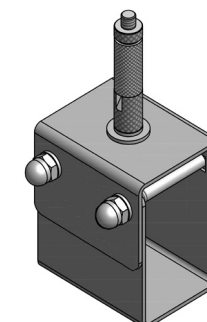
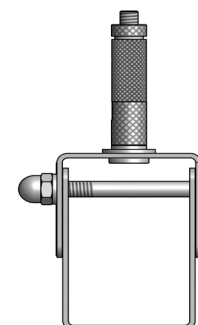
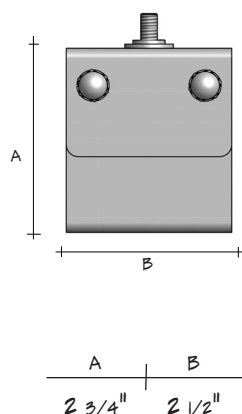


(single-deck)		
Product	Length	Catalog Number
Hanger	Single	HM-S-(F)-ST-H
Cable Glide	15'	CG-15
	Custom	CG-XX

Finish - G=Galvanized W=White B=Black

Single-Deck Hangers are for use with all lengths. Each hanger is a pre-assembled two part unit. The upper half includes a threaded stud for cable glide attachment. 1/4"-20 bolts slide through to secure, align, and lock both halves of the assembly. Cables are attached to the hanger by sliding through the glide. 1/4"-20 eye bolt is for use with beam clamps (by others) and comes pre-installed to the cable.

DOUBLE-DECK

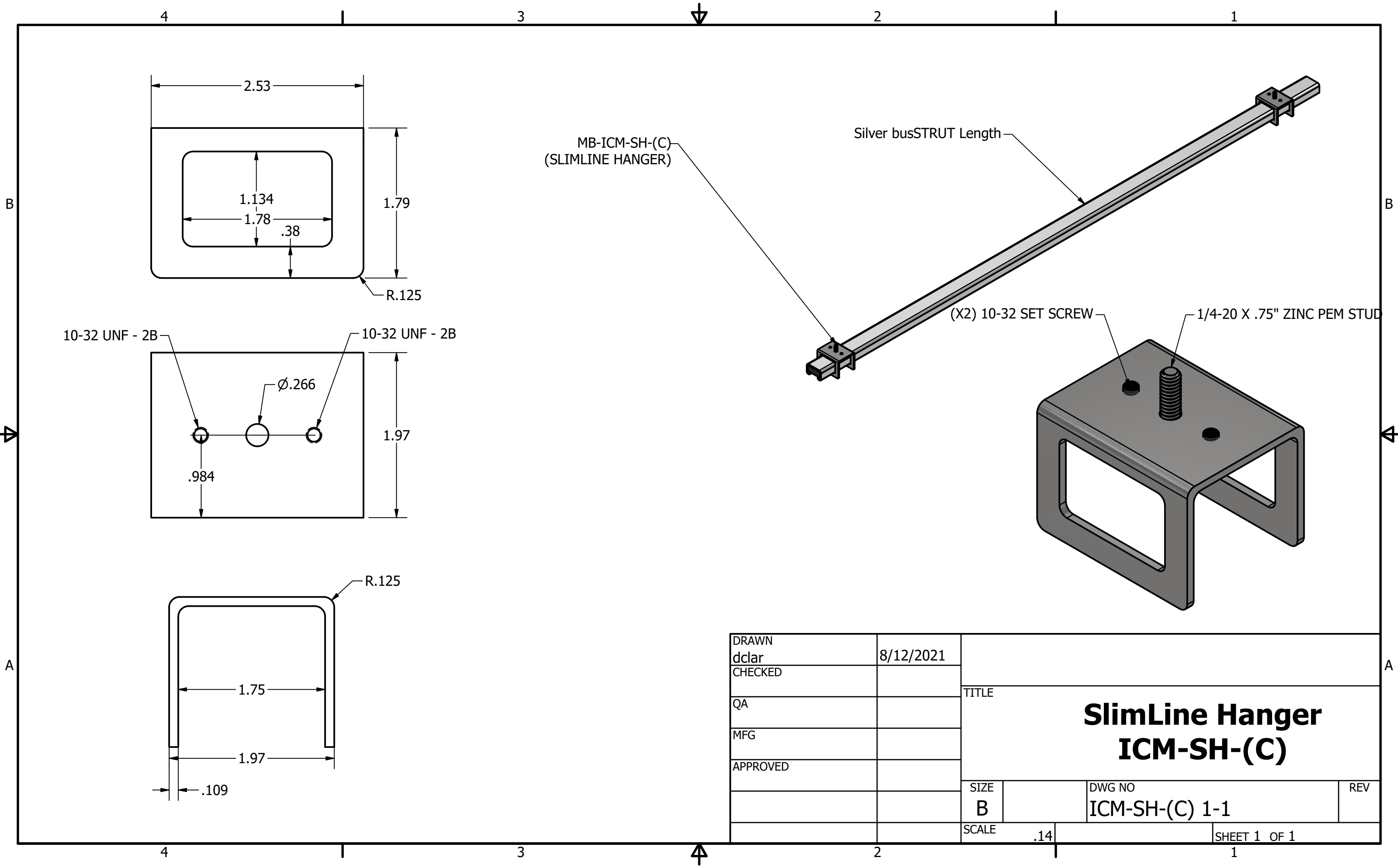


(double-deck)		
Product	Length	Catalog Number
Hanger	Double	HD-S-(F)
Cable Glide	15'	CG-15
	Custom	CG-XX

Finish - G=Galvanized W=White B=Black

Double-Deck Hangers are for use with all lengths. Each hanger is a pre-assembled two part unit. The upper half includes a threaded stud for cable glide attachment. 1/4"-20 bolts slide through to secure, align, and lock both halves of the assembly. Cables are attached to the hanger by sliding through the glide. 1/4"-20 eye bolt is for use with beam clamps (by others) and comes pre-installed to the cable.





DRAWN	dclar	8/12/2021	<div>TITLE</div> <div>SlimLine Hanger</div> <div>ICM-SH-(C)</div>		
CHECKED					
QA					
MFG					
APPROVED			SIZE	DWG NO	REV
			B	ICM-SH-(C) 1-1	
			SCALE	.14	SHEET 1 OF 1