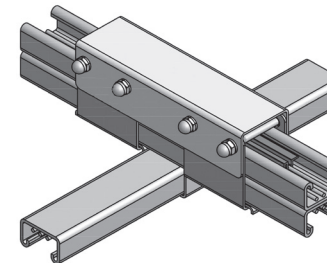
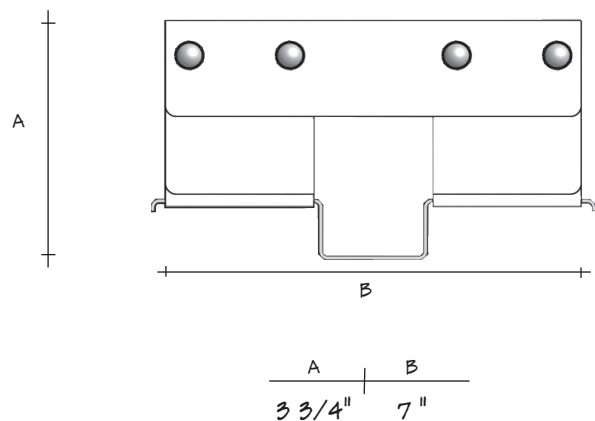




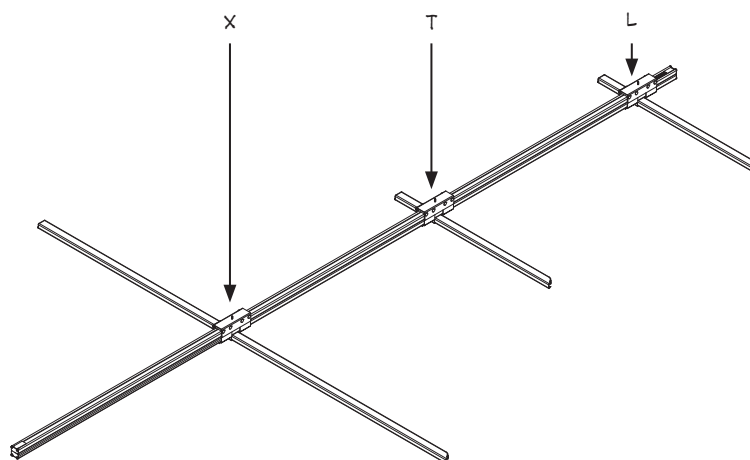
CROSSOVER (2/1) for use as L, T, X



Product	Length	Catalog Number
2/1	Double Single	CD-S-(F)

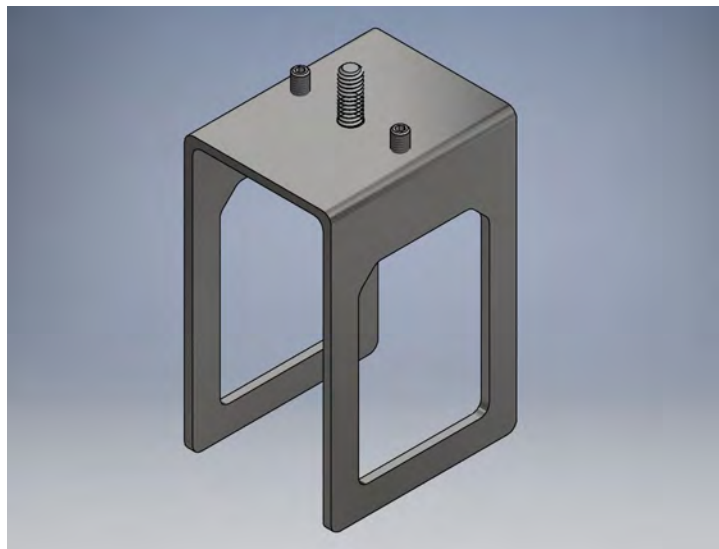
Finish - G=Galvanized W=White B=Black

TWO over ONE crossovers are for use with three busSTRUT lengths. Each crossover is a pre-assembled four part unit for building L,T,X crossover grid configurations. The saddle bracket supports the perpendicular. 1/4"-20 bolts slide through to secure, align, and lock both halves of the assembly in one direction.

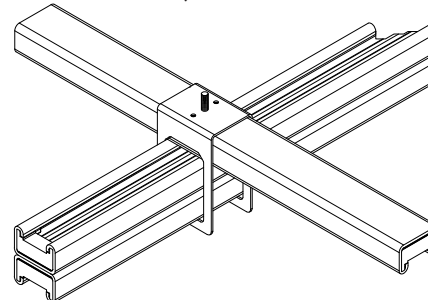


Crossovers provide the mechanical connection for building runs, rows, and grids. One universal crossover serves as an X, T, or an L intercept. The TWO over ONE crossover is used when one double-deck length intersects a single-deck length.

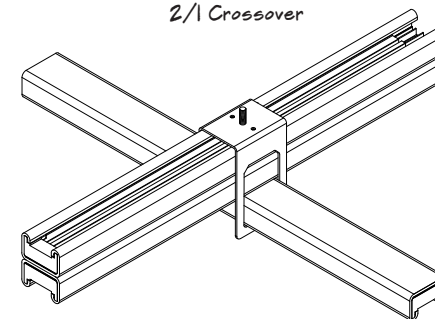
DOUBLE HEIGHT CROSSOVER
for use as L, T, X



1/2 Crossover

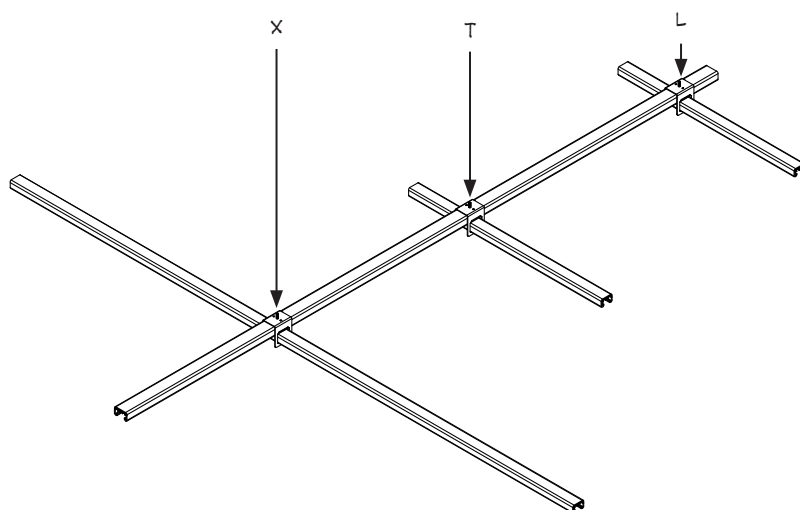


2/1 Crossover



Product	Length	Catalog Number
1/2 - 2/1	Double Single	ICD-S-(B)-ST-X
Finish - G=Galvanized W=White B=Black		

ONE over TWO and **TWO over ONE** crossovers are for use with three lengths. Each crossover is a single unit for building L, T, X crossover grid configurations. The slimline crossover locks both lengths with set screws.



Crossovers provide the mechanical connection for building runs, rows, and grids. One universal crossover serves as an X, T, or an L intercept. The ONE over TWO and TWO over ONE crossovers are used when one double-deck length intersects a single-deck length or vice versa.