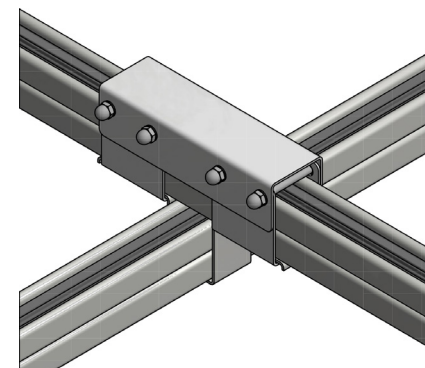
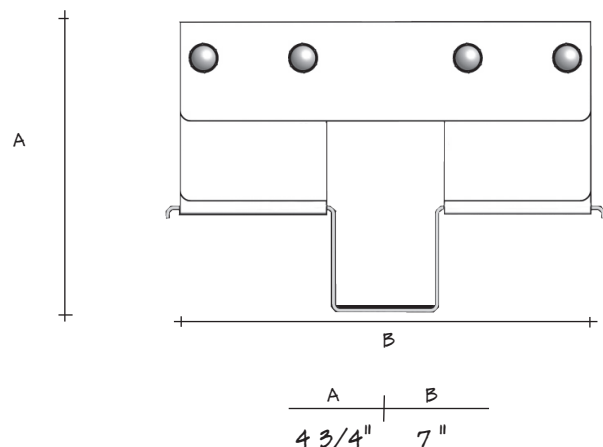




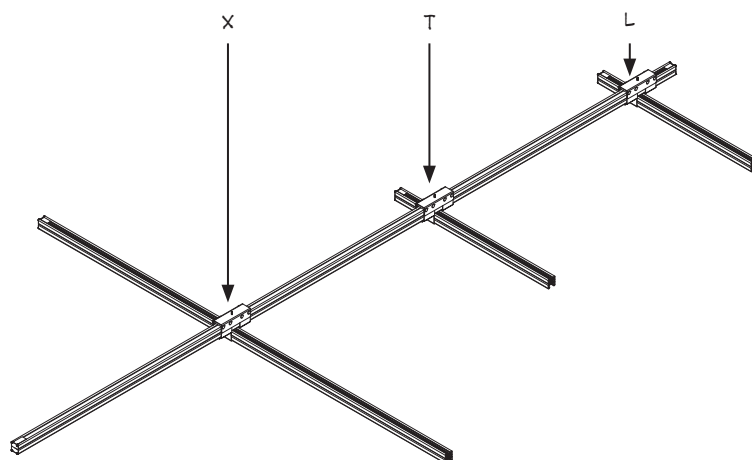
CROSSOVER (2/2)  
for use as L, T, X



Product	Length	Catalog Number
2/2	Double Double	CDD-S-(F)

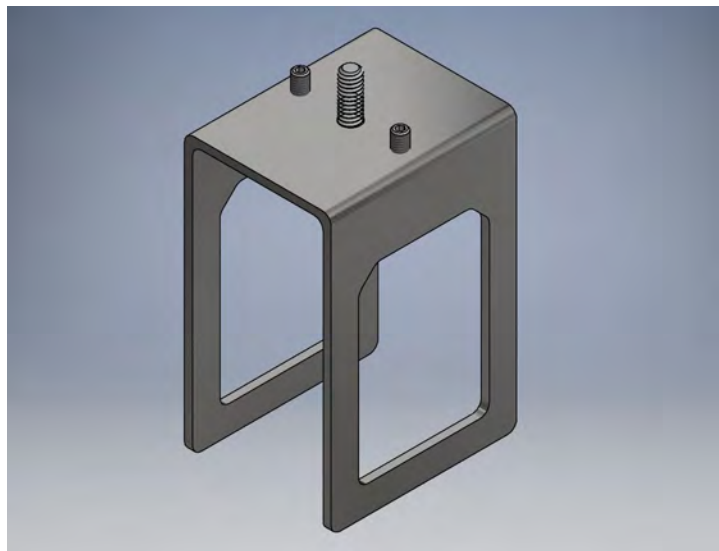
Finish - G=Galvanized W=White B=Black

TWO over TWO crossovers are for use with four busSTRUT lengths. Each crossover is a pre-assembled four part unit for building L,T,X crossover grid configurations. The saddle bracket supports the perpendicular busSTRUT. 1/4"-20 bolts slide through to secure, align, and lock both halves of the assembly in one direction.

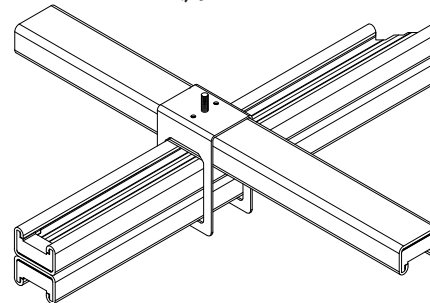


Crossovers provide the mechanical connection for building runs, rows, and grids. One universal crossover serves as an X,T, or an L intercept. The TWO over TWO crossover is used when one double-deck length of busSTRUT intersects another double-deck length of busSTRUT.

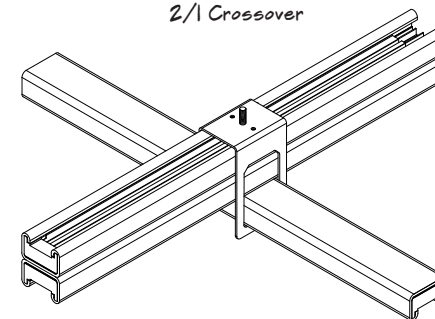
DOUBLE HEIGHT CROSSOVER  
for use as L, T, X



1/2 Crossover

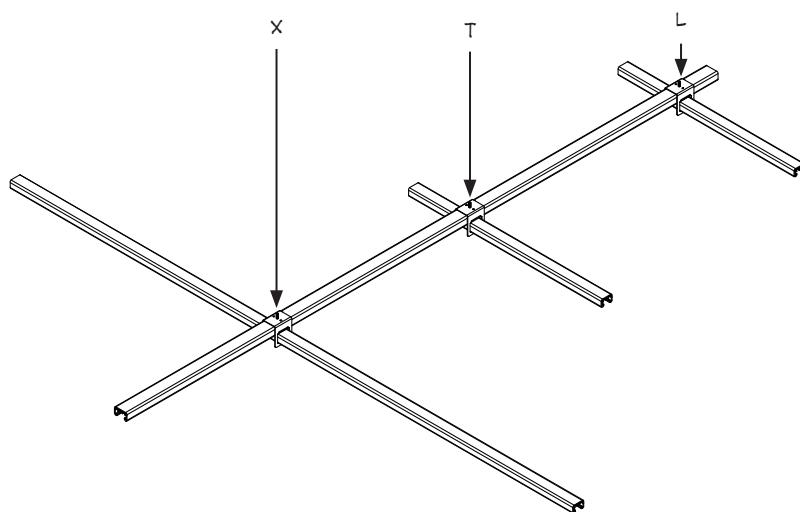


2/1 Crossover



Product	Length	Catalog Number
1/2 - 2/1	Double Single	ICD-S-(B)-ST-X
Finish - G=Galvanized W=White B=Black		

**ONE over TWO** and **TWO over ONE** crossovers are for use with three lengths. Each crossover is a single unit for building L, T, X crossover grid configurations. The slimline crossover locks both lengths with set screws.



Crossovers provide the mechanical connection for building runs, rows, and grids. One universal crossover serves as an X, T, or an L intercept. The ONE over TWO and TWO over ONE crossovers are used when one double-deck length intersects a single-deck length, or vice versa.